



Wood tweed jumpsuit  
and metal hoop beaded  
ear cuffs.

**STYLING ASSISTANCE**

Holly Clefford

**HAIR** Craig Taylor/

One Makeup

**MAKEUP** Ruth Wainwright/

One Makeup

**MODEL** Daria Stadler

Storm Models

**ACCOMMODATION** The Royal

Horseguards, London

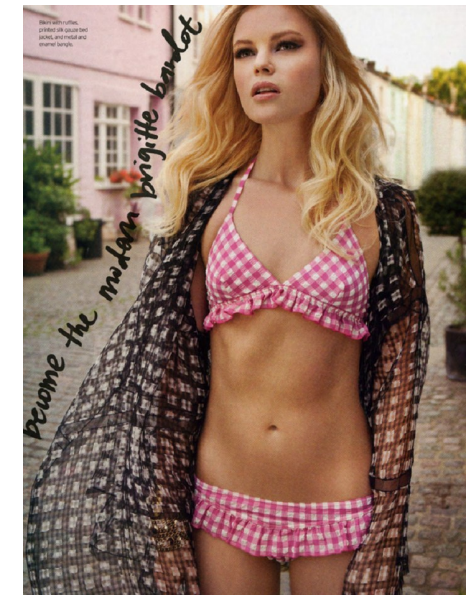
www.guoman.com

On location in London.

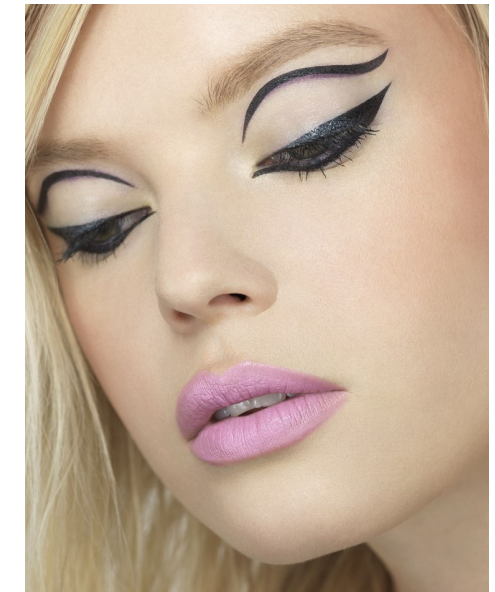


Entire dress and belt  
made of tweed  
with a mix of  
black, white and  
red threads.

wish you  
were here!  
Koxo  
CHANEL



Become the modern  
Brigitte Bardot



**DARIA STADLER**

HEIGHT 5'10.5" BUST 34" B WAIST 24.5" HIPS 36" SHOE 6 UK  
HAIR BLONDE EYES BLUE/GREEN

**PROFILE**

MODEL MANAGEMENT LTD

Profile Model Management - 21 Little Portland Street, 1st Floor - LONDON

W1W8BT Tel : +44 20 7836 5282